

## Statement

Copyright © 2026 Colorlight Cloud Tech Ltd. All rights reserved.  
The information above is for reference only. Technical specifications are subject to change without prior notice.  
For the latest updates, feel free to contact us.

## Colorlight Cloud Tech Ltd

### HEADQUARTERS

📍 37F-39F, 8A, Shenzhen International Innovation Valley, Shenzhen, China

✉ colorlight@lednets.com

🌐 www.colorlightinside.com



Ver.CLT-20260122

Tel. 069-94321130

COMREON®  
Colorlight

# 2026 PRODUCTS

CREATIVE VIDEO · INFINITE FUTURE

# WHO WE ARE

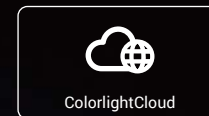
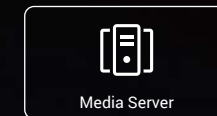
Colorlight is a high-tech company that delivers comprehensive video and imaging solutions by integrating cutting-edge processing algorithms with dedicated hardware. This integrated approach is powered by our core team of experts, who bring proven experience from industry leaders such as STMicroelectronics, Orange, with deep expertise in algorithms, signal control, communications, and FPGA design.

Colorlight has been building a full-stack AI ecosystem covering computing power, chips, applications, and hardware. Supported by a global network spanning over 20 countries across the Americas, Europe, and Asia, we work closely with top-tier AI and chip scientists to drive innovation and advance technological solutions.

Within this ecosystem, Shenzhen Luoshu Intelligent Technology Co., Ltd. serves as a key enabler of AI computing infrastructure, collaborating with leading companies and universities to establish a globally distributed R&D and cooperation network.

## INNOVATIVE PRODUCTS AND SOLUTIONS

Colorlight's offerings include LED controllers, video processors, LED screen calibration solutions, media servers, and cloud-based management services. These products have been widely applied in XR virtual production, smart cities, large-scale events, performance stages, TV studios, business centers, and more.



Tel. 069-94321130

## EXPERIENCED TEAMS

Colorlight employs 1,200+ professionals, including 600+ R&D engineers. Our core team members hail from top universities such as Peking University and Tsinghua University. We also boast a group of senior experts and first-class teams specializing in software, hardware, and embedded systems.

## CUSTOMER-ORIENTED GLOBAL SERVICE

Colorlight operates a global service network from its Shenzhen headquarters, with branches across key Chinese cities including Beijing, Xi'an, Shanghai, Chengdu, and Hong Kong, as well as overseas locations in the United States, the Netherlands, South Korea, and Japan.

We are committed to providing users worldwide with efficient after-sales service and professional technical support.

1200+  
Employees

600+  
R&D Engineers

5  
Departments

8  
Subsidiary



# PROFESSIONAL VIDEO SOLUTION PROVIDER

Colorlight combines advanced video processing algorithms with reliable hardware to deliver comprehensive solutions for video and imaging applications.



# CONTENTS

<b>01</b>	<b>Universe Series</b> Ultimate Video Splicer	04	<b>06</b>	<b>A Series</b> Cloud Networking Player	36
<b>02</b>	<b>VX Series</b> Professional Processor	14	<b>07</b>	<b>CS Series</b> Media Server	44
<b>03</b>	<b>CA Series</b> Video Controller	20	<b>08</b>	<b>DS Series</b> Distributed Controller	50
<b>04</b>	<b>Z Series</b> Super Processor	26	<b>09</b>	<b>Extending</b> Calibration System Kylin Platform Colorlight Developer LEDMaster	56
<b>05</b>	<b>AX Series</b> AI Media Station	32			

# #01 *Universe Series*

The Universe Series — next-generation video splicers designed for video walls — is built on a powerful FPGA architecture and paired with a secure, stable system. With modular flexibility and rich board options, each unit delivers up to 520 million pixels, along with exceptional image processing and advanced screen management — the perfect fit for large-scale display applications.



# U15 Max

## Ultimate Video Splicer

In addition to an impressive load capacity of 520 million pixels, the U15 Max boasts a modular design that supports flexible combinations of 20 types of boards. It can accommodate 20 to 30 input boards and 10 to 20 output boards, with a total of 40 slots available. Input ports include HDMI, DisplayPort (DP), SDI, DVI, IP, VGA, and CVBS, while output options feature Gigabit Ethernet (GbE), 5G Ethernet, 10G fiber, HDMI, and DVI.

Excelling in multiple screen management, it delivers 4K HDR ultra high-quality video with 10-bit video input and processing. It supports video source cropping, scaling, and the addition of various display elements like background images, subtitles, and logos. The unit also supports multiple redundancy options, including fiber ports, Ethernet ports, and power supplies, ensuring high availability. Additional features include dual 4K UHD video preview and monitoring, system health monitoring, and email alert functionality. This versatility makes the U15 Max well-suited for small-pitch LED video walls, LCD video walls, and projection screens.



U15 Max

**520 MP**

Load Capacity  
>63x 4K



Powerful  
Video Processing



Extensive  
Interface Support



Web App  
Control



Multi-Screen  
Management



Dual 4K  
UHD Multiviewer

**HDR**  
8K 12bit

Impeccable  
Visuals

**7x24H**

Reliable &  
Stable



Smart  
Monitoring



Open &  
Compatible

## Pick Your Boards. Configure Your Way.

Input Boards	Ports	Max. Resolution	Output Boards	Ports	Max. Load
	1xHDMI 2.1 + 1xDP 1.4	8192x4320@30Hz		20x1G Ethernet	13 Million Pixels
	2xHDMI 2.0 + 2xDP 1.2	4096x2160@60Hz		8x5G Ethernet	23.6 Million Pixels
	1xHDMI 2.0 + 1xDP 1.2	4096x2160@60Hz		4x10G Fiber	26 Million Pixels
	2xIP	3840x2160@60Hz		4x5G Fiber	11.8 Million Pixels
	4xDVI	SL-DVI: 2048x1152@60Hz DL-DVI: 4096x1080@60Hz		1xHDMI 2.0	4096x2160@60Hz
	2x12G-SDI	4096x2160@60Hz		2xHDMI 2.0	8192x2160@60Hz
	4xHDMI 1.3	2048x1152@60Hz		4xDVI	8192x2160@30Hz
	8xHDMI 1.3	2048x1152@60Hz		8xHDMI 1.3	8192x2160@60Hz
	4xHDBaseT 3.0	4096x2160@60Hz		4xHDMI 1.4	8192x2160@60Hz
	4xAUDIO	192kHz		4xHDBaseT 3.0	8192x2160@60Hz
	4xCVBS	720x576i@50Hz		2x12G-SDI	8192x2160@60Hz
	4xVGA	1920x1200@60Hz		4x3G-SDI	4096x2160@60Hz
	2xVGA + 2xCVBS	1920x1200@60Hz	<b>Preview Board</b>	<b>Ports</b>	<b>Max. Resolution</b>
	4x3G-SDI	2048x1080@60Hz		2x HDMI 2.0	3840x2160@60Hz
	2xCOM 1xEthernet 3xI/O 3xRelay Out 3xIR Out	---	<b>Main Board</b>	<b>Ports</b>	
				1xGENLOCK IN 2xRS-232	1xGENLOCK LOOP 2xUSB 2.0 1x3D VESA 1xEthernet

# More Features. More for You.



**IP Decoding**



**Audio Matrix**



**3D Display**



**Multi-User Collaboration**



**Smart Central Control**







**Fade In/Out**



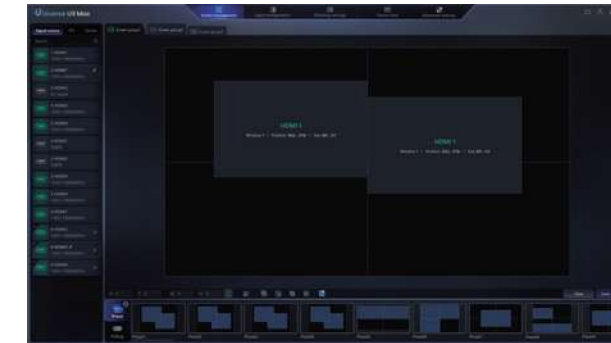
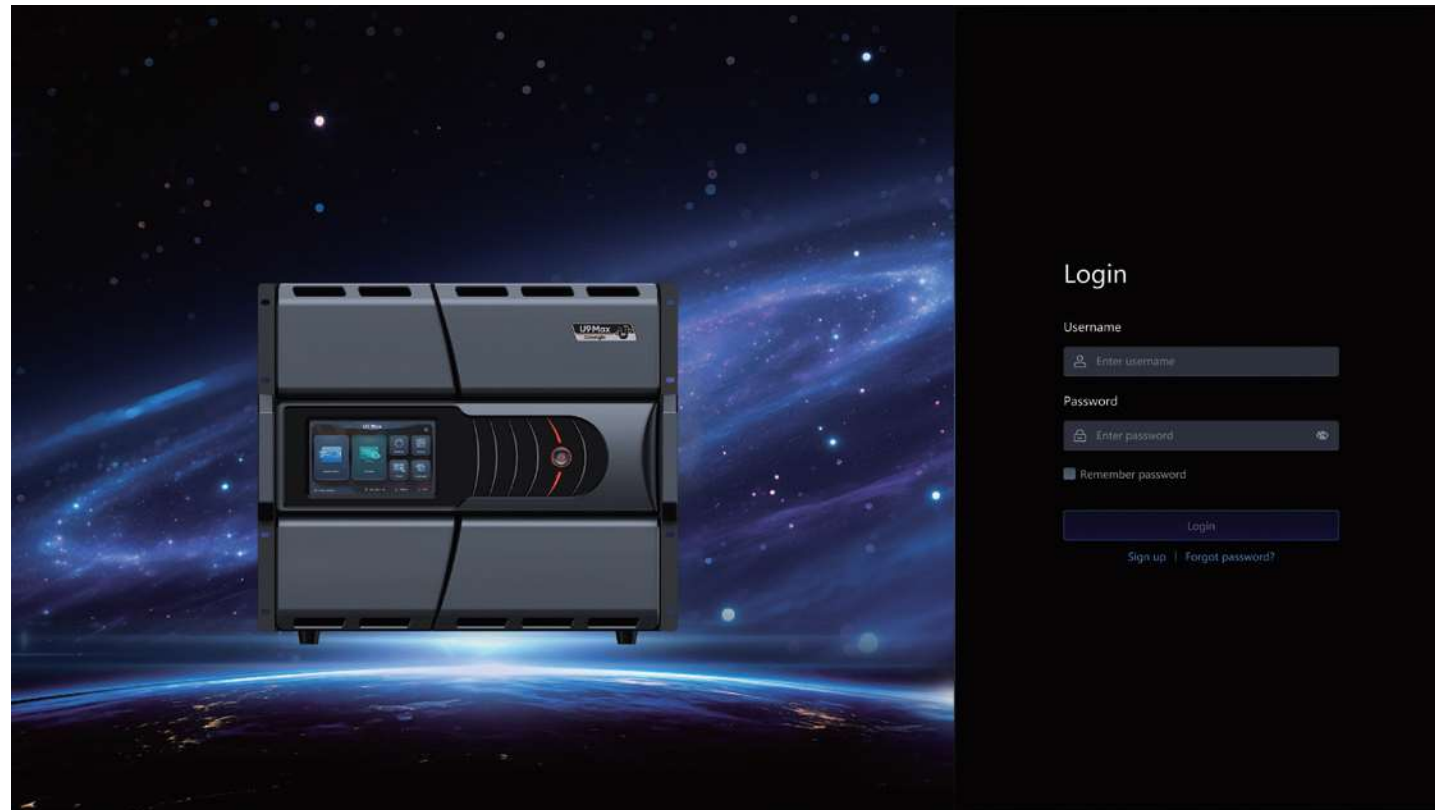
**EDID**

## Specifications

				
	<b>U3 Max</b>	<b>U6 Max</b>	<b>U9 Max</b>	<b>U15 Max</b>
Load Capacity (10G Fiber Output)	78 Million Pixels (12×10G Fiber Ports/120×1G Ethernet Ports)	130 Million Pixels (20×10G Fiber Ports/200×1G Ethernet Ports)	260 Million Pixels (40×10G Fiber Ports/400×1G Ethernet Ports)	520 Million Pixels (80×10G Fiber Ports/800×1G Ethernet Ports)
Load Capacity (5G Ethernet Output)	70 Million Pixels (24×5G Ethernet Ports)	118 Million Pixels (40×5G Ethernet Ports)	236 Million Pixels (80×5G Ethernet Ports)	472 Million Pixels (160×5G Ethernet Ports)
Load Capacity (1G Ethernet Output)	39 Million Pixels (60×1G Ethernet Ports)	65 Million Pixels (100×1G Ethernet Ports)	65 Million Pixels (100×1G Ethernet Ports)	260 Million Pixels (400×1G Ethernet Ports)
Max. Output Channels	24	40	80	160
Max. Input Channels	48	80	144	240
Max. Layers	48	80	160	320
Input Slots	6	10	12	20
Output Slots	3	5	2	10
Input/Output Slots	∅	∅	8	10
Multiviewer (2 × HDMI 2.0)	✓	✓	✓	✓
HDR	✓	✓	✓	✓
10-bit	✓	✓	✓	✓
3D	✓	✓	✓	✓
Power Redundancy	✓	✓	✓	✓
Web Control	✓	✓	✓	✓
Certifications	FC CE I C CB △ 2K K △ △ PS ENEC	FC CE I C CB △ 2K K △ △ PS ENEC	FC CE I C CB △ 2K K △ △ PS ENEC	FC CE I C CB △ 2K K △ △ PS ENEC

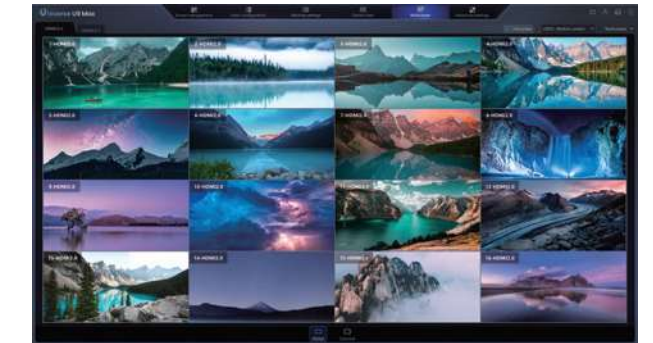
# Universe Control Platform

Streamline your screen management with the Universe Control Platform, a web app designed for the Universe Series video splicers. Configure and control screens effortlessly via your browser, with features like Multiviewer, Ethernet port redundancy, advanced seam correction, screen group management, and permission management at your fingertips. With a sleek interface and powerful features, managing screens is now smooth and effortless.



## Screen Management

- Intuitive, interactive UI
- Ease of use



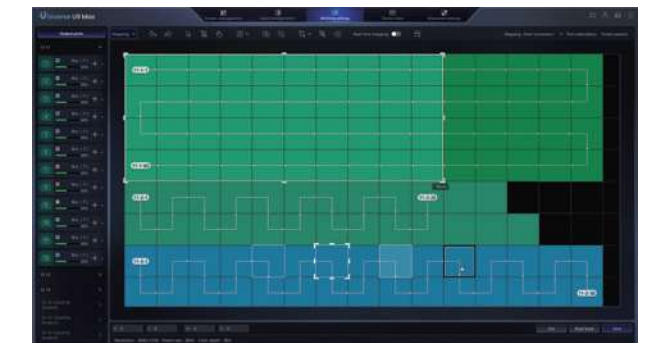
## Multiviewer

- Ultra HD
- User-definable preview



## User Management

- Modular permission management
- Multi-user collaboration

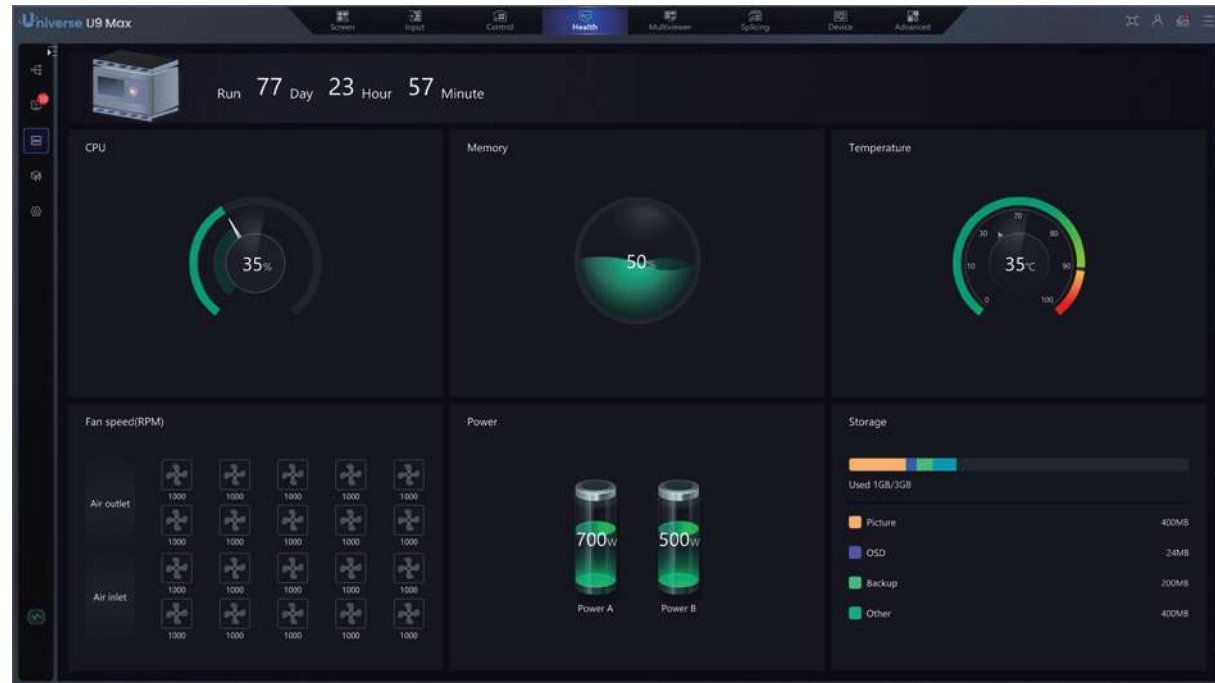


## Splicing Settings

- Quick mapping
- Screen parameters library
- Ethernet port redundancy

# Health

End-to-end monitoring: Signal - Device - Screen. Clarity and control at every stage.



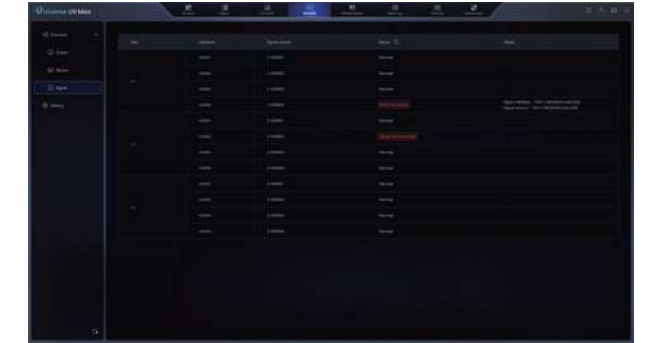
## Device

- CPU
- Memory
- Temperature
- Fan speed
- Power supply
- Storage
- Runtime



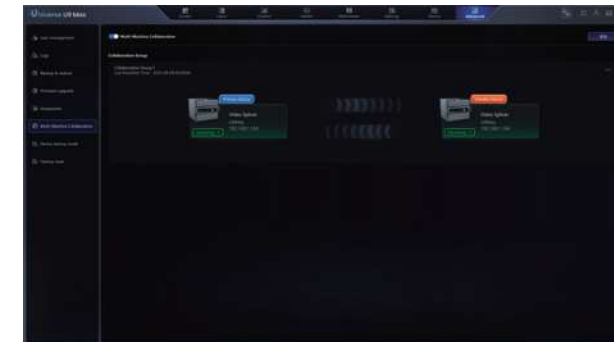
## Screen

- Connection status
- Temperature
- Humidity
- Voltage
- Bit error rate



## Signal

- Connection status
- EDID matching



## SyncLink & Processor Redundancy

- Real-time data synchronization
- Primary-backup monitoring



## Multi-Device Control

- Real-time control of multiple devices

Tel. 069-94321130

## #02 VX Series

VX series is Colorlight's professional LED video controller, born for brilliance. It is broadly applicable to mid-to-high-end rental, stage control and fine-pitch LED display.

VX series supports 4K input and makes your display more visually exceptional with HDR and zero latency, more stable with real-time HDMI preview&monitoring and input hot backup, more efficient with U-disk quick screen configuration, and more flexible with IP-based web control.



# VX20

## Professional Processor

VX20 is a versatile 4K video processor designed for high-end rental and fine-pitch scenarios, integrating the functions of video switching and controlling.

It is not only powerful in image processing and LED display control, but also professional in image switching and previewing, making it an ideal choice for presenting a stunning visual feast.



VX20

**13.1 Million**  
Large Capacity

**PVW & PGM**  
Stage Rental

 **Powerful Video Processing**

 **Ultra-Low Latency**

 **Multi-Redundancy**

 **Multiviewer**

 **Web Control**

 **Three Work Modes**

## Specifications



VX6



VX10

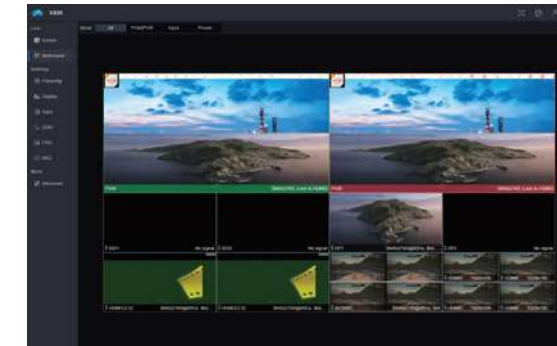
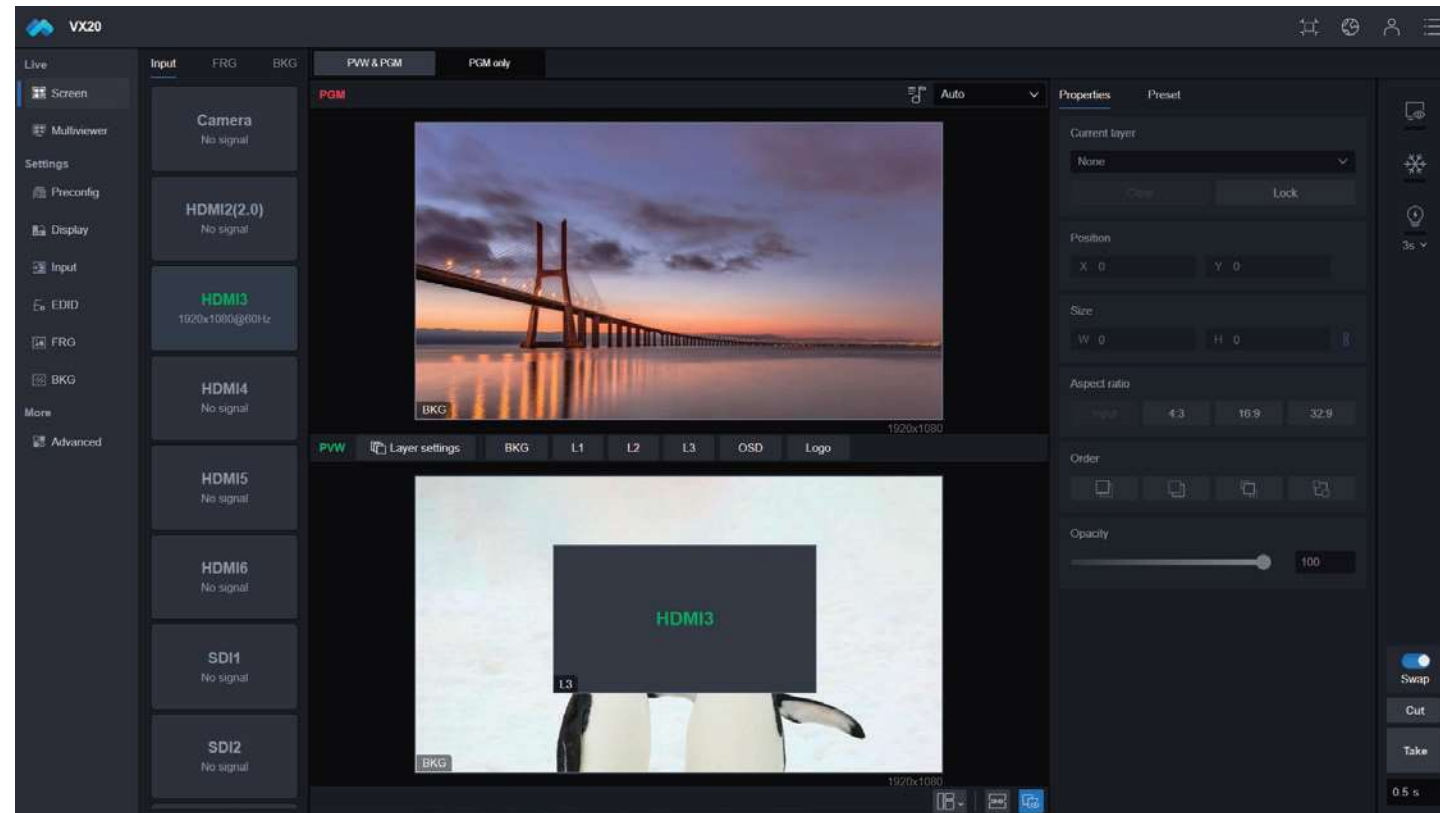


VX20

Load Capacity	3.9 Million Pixels	6.5 Million Pixels	13.1 Million Pixels
Input	1×HDMI 2.0 1×HDMI 1.4 (IN&LOOP) 1×DVI (IN&LOOP) 1×DVI 1×3G-SDI (IN&LOOP) 1×10G Fiber	1×HDMI 2.0 1×HDMI 1.4 (IN&LOOP) 1×DVI (IN&LOOP) 1×DVI 1×3G-SDI (IN&LOOP) 1×10G Fiber	2×HDMI 2.0 (IN&LOOP) 2×DP 1.2 2×12G-SDI (IN&LOOP) 4×HDMI 1.4 (IN&LOOP)
Input Resolution	4096×2160@60Hz	4096×2160@60Hz	4096×2160@60Hz
Output	6×1G Ethernet/2×10G Fiber	10×1G Ethernet/2×10G Fiber	20×1G Ethernet/4×10G Fiber
Multiviewer	2K Image Monitoring	2K Image Monitoring	4K Image/Input Preview & Monitoring
HDCP	2.2/1.4	2.2/1.4	2.2/1.4
Control	USB/RS232/LAN	USB/RS232/LAN	USB/RS232/LAN
Video Processing	Zero Latency (Bypass Mode), Cropping, Switching, Scaling	Zero Latency (Bypass Mode), Cropping, Switching, Scaling	Zero Latency (Bypass Mode), Cropping, Switching, Scaling
Color Management	Hue, Saturation, Contrast, Brightness, Color Temp	Hue, Saturation, Contrast, Brightness, Color Temp	Hue, Saturation, Contrast, Brightness, Color Temp
Layers	3	3	3
Preset	128	128	1000
Input Hot Backup	✓	✓	✓
U-Disk	✓	✓	✓
Genlock	✓	✓	✓
HDR	✓	✓	✓
Audio	✓	✓	✓
Loop	✓	✓	✓
Certifications	CE FC CB 4K IC ENE RoHS	CE FC CB 4K IC ENE RoHS	CE FC CB 4K IC ENE RoHS

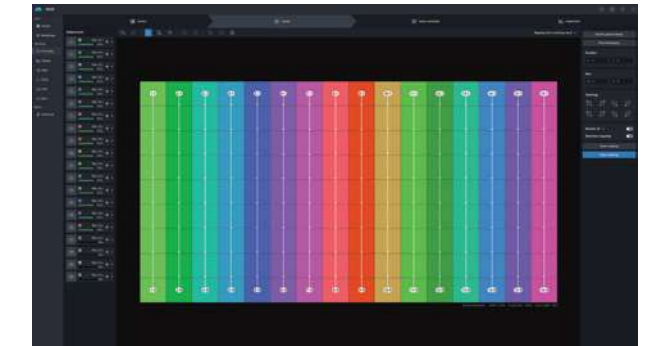
# Web Control Platform

The VX20-WEB is a professional LED display control system offering comprehensive functionality, robust performance, and exceptional user experience, empowering users with efficient screen control.



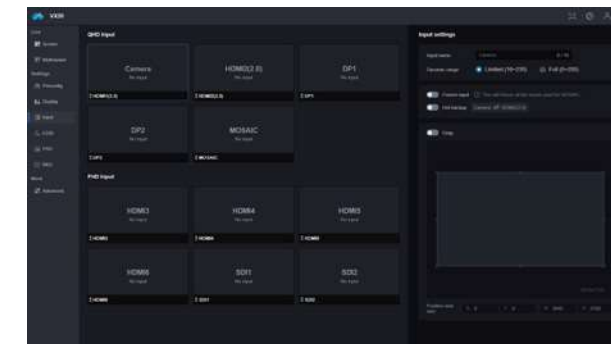
## Multiviewer

- Ultra HD
- Multiple layouts



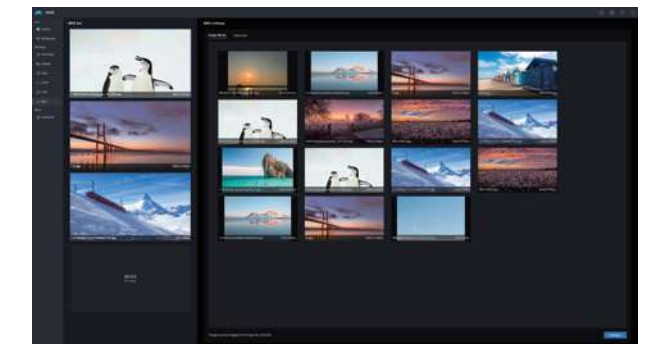
## Layout

- Screen parameters library
- Quick mapping



## Input

- Input list
- Quick setup



## Image Library

- Centralized management
- Global accessibility

# #03 CA Series

The CA Series is Colorlight's latest flagship video controller. With powerful processing, advanced color management, and seamless integration with ColorAdept, it delivers stunning visuals for stadiums, live events, broadcasting, virtual production, and dome screens.



# CA20

## Video Controller

The CA20 is a 4K flagship video controller with versatile inputs (HDMI/DP/SDI) and Giga-bit Neutrik/10G optical outputs. It delivers true-to-life images with 8/10/12-bit support and up to 240Hz frame rate. 0-Frame Delay and Adaptive Frame Rate keep every frame true to the source.

Advanced color tools (Dynamic Color Gamut, Color Magic, 3D LUT) and Frame Rate Multiplication (Frame Multiplexing, Dissolve Frame, ShutterLock) unlock creative flexibility for diverse scenarios. Instant MVR, full redundancy, and smart health monitoring ensure stability and reliability at every event.



CA20

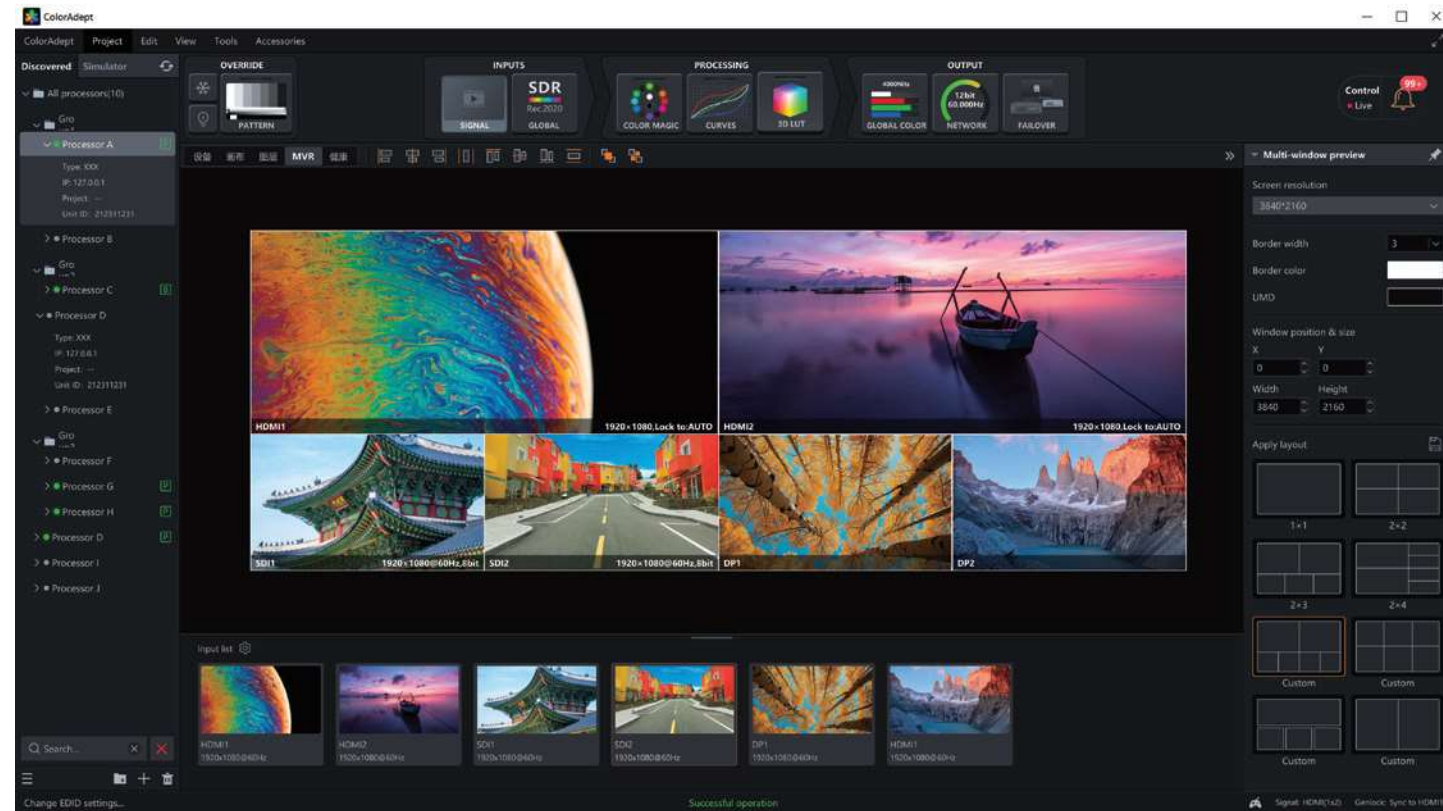
- 4K HDR**  
Input
- 12 BIT**  
Deep Color
- 24~240Hz**  
Adaptive Frame Rate
- Ultra-Low Latency
- Dynamic Color Gamut
- Color Curve
- Color Magic
- 3D LUT
- Frame Multiplexing
- ShutterLock

## Specifications

	CA6	CA10	CA20	CA8-5G <span style="color: red; font-weight: bold;">5G</span>
Load Capacity	3.9 Million Pixels	6.5 Million Pixels	9 Million Pixels	9 Million Pixels
Input	2×HDMI 2.0 & 2×LOOP 2×12G-SDI & 1×LOOP	2×HDMI 2.0 & 2×LOOP 2×DP1.2 2×12G-SDI & 1×LOOP	2×HDMI 2.0 & 2×LOOP 2×DP1.2 2×12G-SDI & 1×LOOP	2×HDMI 2.0 & 2×LOOP 2×DP1.2 2×12G-SDI & 1×LOOP
Input Resolution	4096×2160@60Hz	4096×2160@60Hz	4096×2160@60Hz	4096×2160@60Hz
Output	6×1G Neutrik 2×10G Fiber	10×1G Neutrik 2×10G Fiber	20×1G Neutrik 4×10G Fiber	8×5G Neutrik 4×10G Fiber
HDCP	2.3/2.2/1.4	2.3/2.2/1.4	2.3/2.2/1.4	2.3/2.2/1.4
Layers	4	4	4	4
Genlock	✓	✓	✓	✓
HDR	✓	✓	✓	✓
Color Management	Hue, Saturation, Contrast, Brightness, Color Temp, 3D LUT, Color Magic, Color Curve			
Ultra-Low Latency	✓	✓	✓	✓
Adaptive Frame Rate	✓	✓	✓	✓
No Rectangle Restriction	✓	✓	✓	✓
Fiber Port Expansion Mode	✓	✓	✓	✓
Certifications	CE FCC UK IC RoHS ENEC	CE FCC UK IC RoHS ENEC	CE FCC UK IC RoHS ENEC	CE FCC UK IC RoHS ENEC

# ColorAdept

ColorAdept streamlines LED wall setup with an intuitive interface and clear workflow. Compatible with Windows and macOS, it also supports remote control via Gigabit Ethernet.



## MVR

MVR enables real-time monitoring of multiple video sources, integrating key elements like source status and video info. It simplifies video management for quick troubleshooting.

## Dynamic Color Gamut

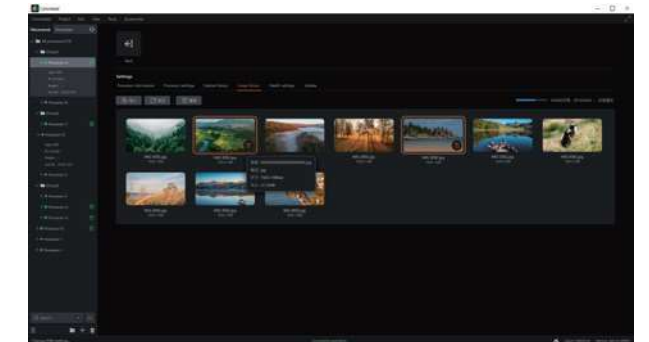
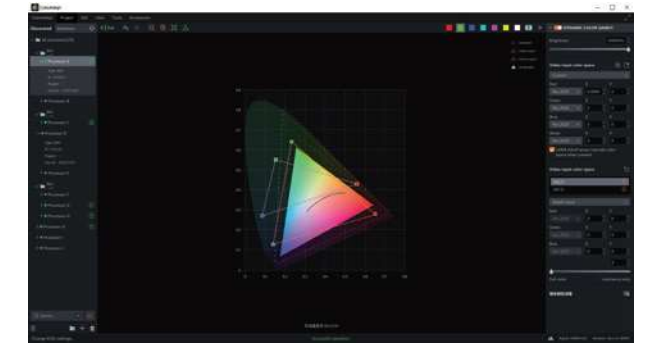
Based on the native gamut and advanced color-matching algorithm, it optimizes the output to faithfully reproduce your target colors. Say goodbye to gamut deviations and enjoy vivid, true-to-life visuals that immerse you in every scene.

## System Health

The software monitors system status (inputs, connections, cable errors, temperature, humidity, voltage, PSU, fans, dead pixels, etc.) for fast on-site troubleshooting.

## Image Library

Stores up to 1GB and allows instant drag-and-drop uploads. Images can be used for test patterns, frame multiplexing, canvas backgrounds, and more.



# #04 Z Series

Z series is Colorlight's super processor, which integrates video splicing, video processing and signal sending in a single device. High-end color management functions such as 3D LUT, Color Magic, Color Curve and HDR enable natural and breathtaking visual effects.

10G optical fiber outputs and 5G Ethernet ports significantly reduce the amount of wiring, making the Z series an ideal choice for ultra-long, ultra-high, and ultra-large screens.

Featuring powerful video processing, excellent color adjustment, and enhanced efficiency, the Z series is widely applied in virtual production, stage performance, and customized projects demanding high-quality image and high-end functions.



# Z6 PRO-G2

## Super Processor

Z6 PRO-G2 is a next-generation professional LED display controller that combines video splicing, processing, and sending with cinematic-grade color tools—including 3D LUT, Color Magic, and Color Curve—for UHD, high-quality imaging.

Packed with practical features, it excels in high-end rental stages, XR virtual production, and film shoots.



Z6 PRO-G2

**10 BIT**  
Deep Color

**HDR**  
WCG

 Low Latency

 Frame Multiplexing

**4K**  
Input

**240**  
Frame Rate

 3D LUT

 Color Magic

## Specifications



Z3



Z4 Pro



Z5



Z6 PRO-G2

Input	1×HDMI 2.0 1×DP 1.2 1×12G-SDI	1×HDMI 2.0 1×DP 1.2 1×12G-SDI	1×HDMI 2.0 1×DP 1.2 1×12G-SDI	4×(HDMI 2.0/DP 1.2/12G-SDI)
Input Resolution	4096×2160@60Hz	4096×2160@60Hz	4096×2160@60Hz	4096×2160@60Hz
HDCP	2.3/1.4	2.3/1.4	2.3/1.4	2.3/1.4
Output	6×5G Ethernet 3×10G Fiber	10×1G Ethernet 1×10G Fiber	20×1G Ethernet 2×10G Fiber	4×10G Fiber (2 Primary + 2 Backup)
Load Capacity	8.8 Million Pixels	6.55 Million Pixels	13.1 Million Pixels	8.8 Million Pixels
Video Processing	Low Latency, Cropping, Scaling, Splicing	Low Latency, Cropping, Scaling, Splicing	Low Latency, Cropping, Scaling, Splicing	Low Latency, Frame Multiplexing, Cropping, Scaling, Splicing
Color Management	Hue, Saturation, Contrast, Brightness, Color Temp	Hue, Saturation, Contrast, Brightness, Color Temp	Hue, Saturation, Contrast, Brightness, Color Temp	Hue, Saturation, Contrast, Brightness, Color Temp 3D LUT, Color Magic, Color Curve
Layers	3	3	3	4
5G Transmission	✓	⊘	⊘	⊘
Genlock	✓	✓	✓	✓
HDR	✓	✓	✓	✓
USB Control	✓	✓	✓	✓
IP Control	✓	✓	✓	✓
Certifications	CE FCC CB IC UK EAC	CE FCC CB IC RoHS EAC	CE FCC CB IC RoHS EAC	CE FCC CB IC RoHS EAC

# iSet

iSet is a professional, easy-to-use LED display configuration and control software that frees end users from complex display settings.



## Management

- Windows, macOS available
- Support Ethernet control
- Convenient for multiple devices management

## Flexible

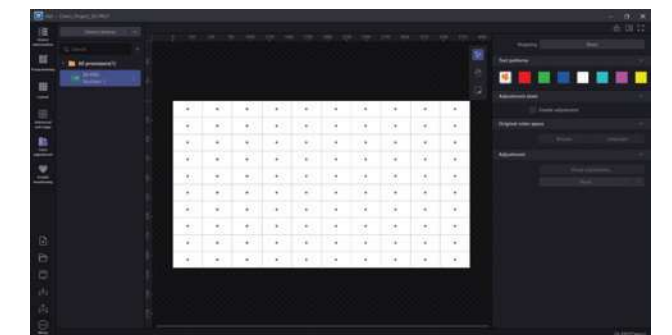
- Simple operation interface
- Clear LED cabinet layout
- Flexible in configuring a visual stage

## Advanced Soft Edge

- Quickly remove bright/dark lines after assembly
- Improve screen uniformity

## Color Adjustment

- Eliminate the display differences between different batches of LED cabinets



# #05 AX Series

The AX Series, short for AI.X, is a new generation of intelligent playback & control devices built on industry-leading AI processors and ultra-high-definition algorithms. With AI-powered expansion, it unlocks infinite possibilities for meeting scenarios.

The AX series is ideal for indoor meetings. It supports synchronous and asynchronous display, third-party app installation, and features built-in AI algorithms that significantly enhance image quality, effectively improving the viewing experience of LED screens.



# AX Series

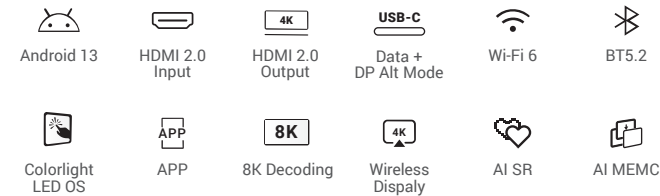
## AI Media Station

The AX series AI Media Station supports multi-layer display and 8K video decoding, along with LAN/Wi-Fi network access for cloud networking management. Featuring robust interactivity and smart control, it can be mounted on a wall, on the back of the LED screen, or placed on a desktop without requiring modifications to the screen structure.

It is ideal for LED displays in multifunctional classrooms, conference rooms, exhibition halls, lecture halls, and banquet halls, ensuring optimal display performance.



AX08



## Specifications



AX06



AX08



AX6K

CPU	8nm 8-Core 64-Bit CPU, 2.4GHz	8nm 8-Core 64-Bit CPU, 2.4GHz	8nm 8-Core 64-Bit CPU, 2.4GHz
Memory	4GB+64GB	8GB+128GB	8GB+128GB
Load Capacity	3.9 Million Pixels Up to 8192 Pixels in Width Up to 4320 Pixels in Height	5.2 Million Pixels Up to 8192 Pixels in Width Up to 4320 Pixels in Height	HDMI 2.1 Up to 8192 Pixels in Width Up to 4320 Pixels in Height
Wi-Fi	Wi-Fi 6 (AP), Wi-Fi 6 (STA)	Wi-Fi 6 (AP), Wi-Fi 6 (STA)	Wi-Fi 6 (AP), Wi-Fi 6 (STA)
Input	2×HDMI 1.4 1×USB 3.0, 1×USB 2.0, 1×USB-C	1×HDMI 2.0, 1×HDMI 1.4 1×USB 3.0, 1×USB 2.0, 1×USB-C	1×HDMI 2.0, 1×HDMI 1.4 1×USB 3.0, 1×USB 2.0, 1×USB-C
Output	6×RJ45, 1×HDMI 2.0 1×3.5mm Audio 1×S/PDIF	8×RJ45, 1×HDMI 2.0 1×3.5mm Audio 1×S/PDIF	1×HDMI 2.1 1×3.5mm Audio 1×S/PDIF
Control Port	1×RJ45, 1×RS232, 1×Sensor Port, USB-A, USB-C, IR IN, I/O	1×RJ45, 1×RS232, 1×Sensor Port, USB-A, USB-C, IR IN, I/O	1×RJ45, 1×RS232, 1×Sensor Port, USB-A, USB-C, IR IN, I/O
USB-C	Mouse and Keyboard	✓	✓
	Device Configuration	✓	✓
	USB Flash Drive	✓	✓
Touch Control	4K Feedback	⊘	⊘
	Touch Control	⊘	✓
Dimensions (L×W×H)	220mm×188mm×47mm	220mm×188mm×47mm	220mm×188mm×47mm
Input Power	DC 12V 3A	DC 12V 3A	DC 12V 3A
Certifications	CE FCC CB ENEC ETL PS	CE FCC CB ENEC ETL PS	CE FCC CB ENEC ETL PS

# #06 A Series

ColorlightCloud is built on an Internet-based platform that integrates IoT and cloud computing technologies. It connects seamlessly with LED displays and supports functions such as daily information release, regular updates, and plug-and-play. Moreover, it delivers information precisely through remote management and monitoring. It is ideal for a wide range of applications, including commercial real estate, sports events, brand retail, and smart city construction.



# A Series

## Cloud Networking Player

A series is Colorlight cloud networking player that supports synchronous display and asynchronous playback. Leveraging the free and powerful ColorlightCloud platform, it offers functions such as player monitoring, program creation, program scheduling, centralized program publishing, and hierarchical management.

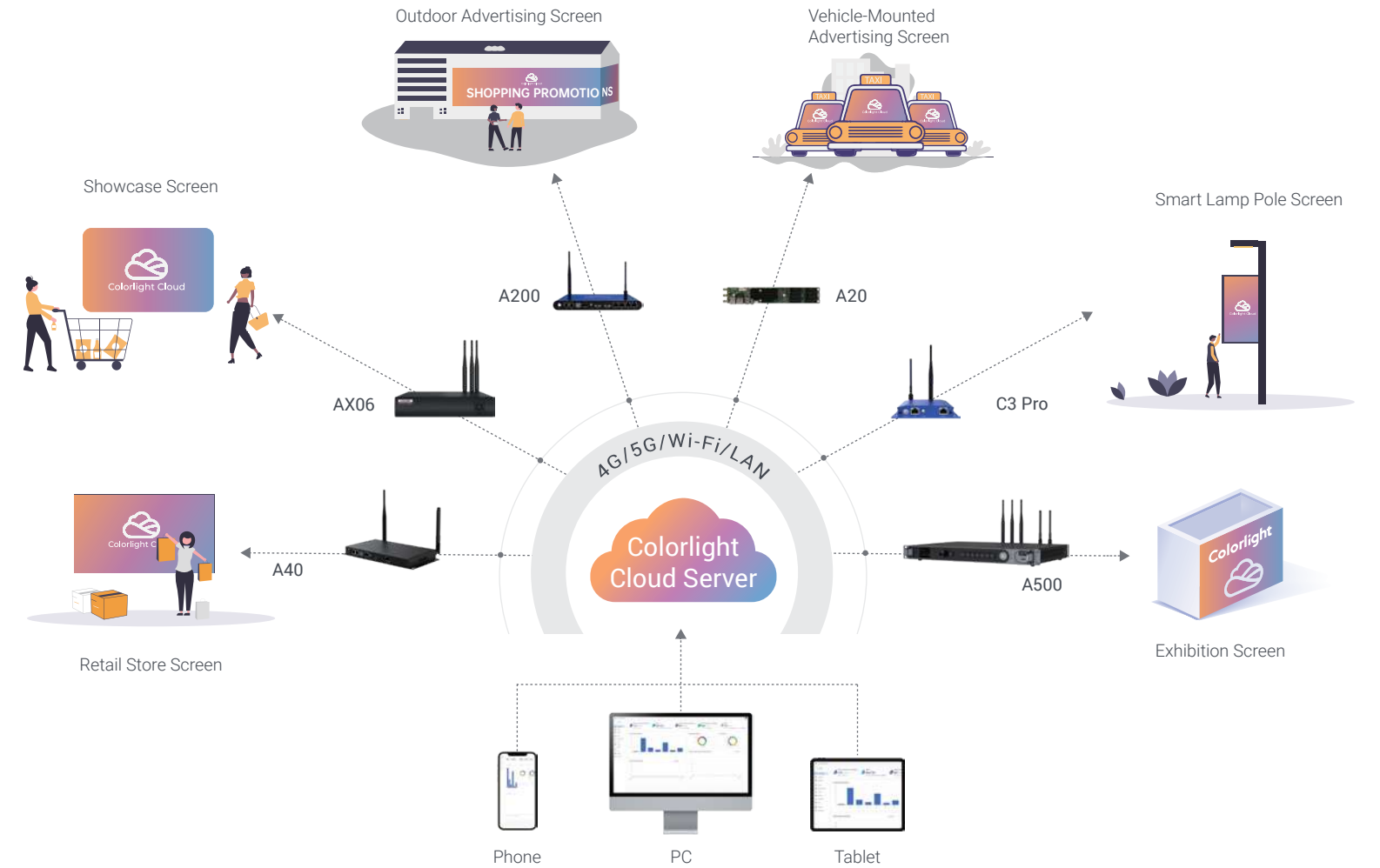
As a brand-new networking control system, A series has strong advantages in applications such as outdoor commercial advertising screens, public place information release screens, chain screens, vehicle-mounted screens, window screens, and advertising players.








A800

- 8K Decoding
- Wi-Fi 6
- 4G/5G
- Cloud Server
- USB
- Android 13
- BT5.2
- 8GB
- 128GB
- HDMI 2.0






## Cloud Control Diagram



## Specifications

					
	<b>A20</b>	<b>C3 Pro</b>	<b>A2K</b>	<b>A4K</b>	<b>A40</b>
OS	Android 9	Android 9	Android 9	Android 9	Android 9
Video Decoding	1080P	4K	4K	4K	4K
Dimensions (LxWxH)	235mmx40mmx16.5mm	135.71mmx125mmx25.3mm	108mmx128mmx26mm	215mmx94mmx32mm	256.4mmx127.6mmx26.2mm
Storage	8GB	32GB	32GB	32GB	32GB
USB Flash Drive	≤256GB	≤256GB	≤256GB	≤256GB	≤256GB
Gigabit Ethernet Port	None (with own receiving card)	1	⊘	⊘	1
Load Capacity	0.13 Million Pixels Up to 1024 Pixels in Width Up to 1024 Pixels in Height	0.65 Million Pixels Up to 4096 Pixels in Width Up to 3840 Pixels in Height	⊘	⊘	0.65 Million Pixels Up to 4096 Pixels in Width Up to 2560 Pixels in Height
HDMI IN	⊘	⊘	⊘	⊘	1
HDMI OUT	⊘	⊘	1920x1200@60Hz	3840x2160@60Hz	⊘
Cloud Services	✓	✓	✓	✓	✓
LAN	Fast Ethernet	Fast Ethernet	Fast Ethernet	Gigabit Ethernet	Fast Ethernet
4G/5G	Optional	Optional	Optional	Optional	Optional
Wi-Fi	✓	✓	✓	✓	✓
Intelligent Control	✓	✓	✓	✓	✓
Synchronized Media Playback	✓	✓	✓	✓	✓
External Sensor	Optional	Optional	⊘	⊘	Optional
Streaming Media	✓	✓	✓	✓	✓
Certifications	RoHS ENEC	RoHS CE FCC CB EAC NTRA	RoHS CE FCC CB EAC ENEC	RoHS CE ENEC NTRA	RoHS CE FCC CB EAC NTRA

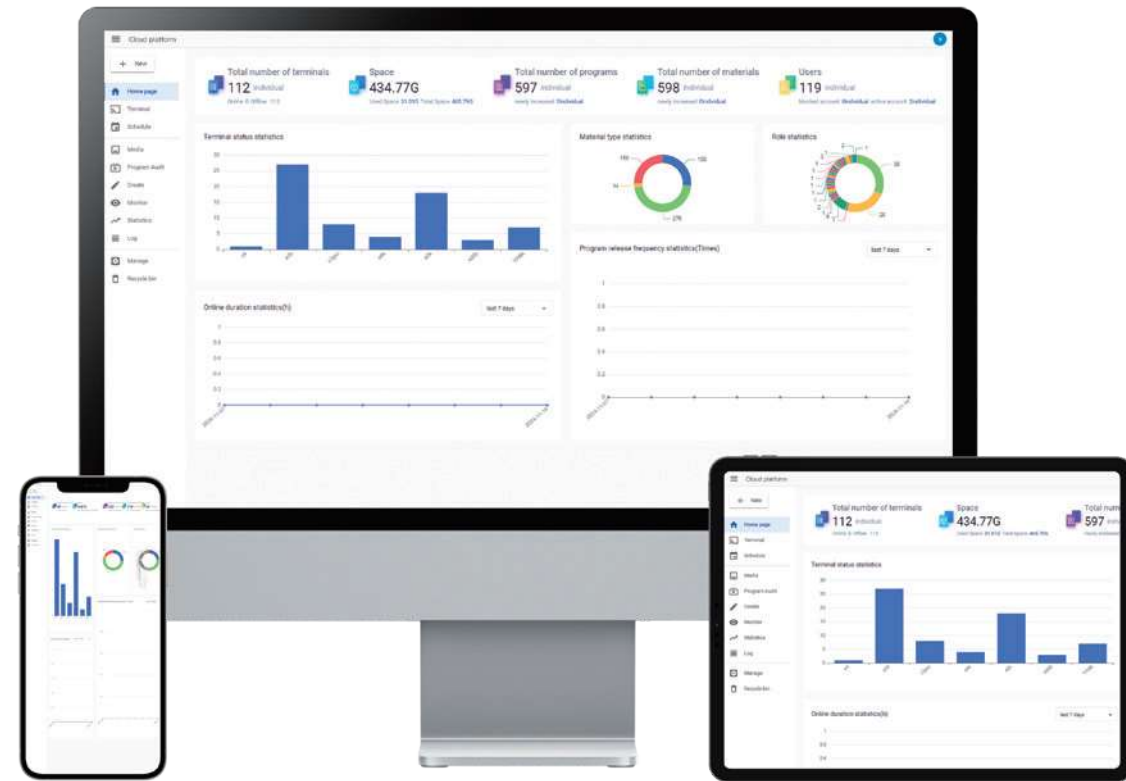
## Specifications

					
	<b>A60</b>	<b>A100</b>	<b>A200</b>	<b>A500</b>	<b>A800</b>
OS	Android 9	Android 9	Android 9	Android 13	Android 13
Video Decoding	4K	4K	4K	8K	8K
Dimensions (LxWxH)	256.4mmx127.6mmx26.2mm	234.8mmx137.4mmx26mm	234.8mmx137.4mmx26mm	482.6mmx360.92mmx51mm	482.6mmx360.92mmx51mm
Storage	32GB	32GB	32GB	64GB	128GB
USB Flash Drive	≤256GB	≤256GB	≤256GB	≤256GB	≤256G
Gigabit Ethernet Port	2	2	4	8	16
Load Capacity	1.3 Million Pixels Up to 4096 Pixels in Width Up to 2560 Pixels in Height	1.3 Million Pixels Up to 4096 Pixels in Width Up to 2560 Pixels in Height	2.3 Million Pixels Up to 4096 Pixels in Width Up to 2560 Pixels in Height	5.2 Million Pixels Up to 8192 Pixels in Width Up to 4320 Pixels in Height	8.8 Million Pixels Up to 8192 Pixels in Width Up to 4320 Pixels in Height
HDMI IN	1	1	1	1xHDMI 2.0, 2xHDMI 1.4	1xHDMI 2.0, 2xHDMI 1.4
HDMI OUT	⊘	1920x1200@60Hz	1920x1200@60Hz	3840x2160@60Hz	3840x2160@60Hz
Cloud Services	⊘	✓	✓	✓	✓
LAN	Fast Ethernet	Fast Ethernet	Fast Ethernet	Gigabit Ethernet	Gigabit Ethernet
4G/5G	⊘	Optional	Optional	Optional	Optional
Wi-Fi	✓	✓	✓	✓	✓
Intelligent Control	✓	✓	✓	✓	✓
Synchronized Media Playback	✓	✓	✓	✓	✓
External Sensor	Optional	Optional	Optional	Optional	Optional
Streaming Media	✓	✓	✓	✓	✓
Certifications	RoHS CE FCC CB EAC NTRA	RoHS CE FCC CB EAC NTRA	RoHS CE FCC CB EAC NTRA	RoHS CE FCC ENEC	RoHS CE FCC ENEC

# ColorlightCloud

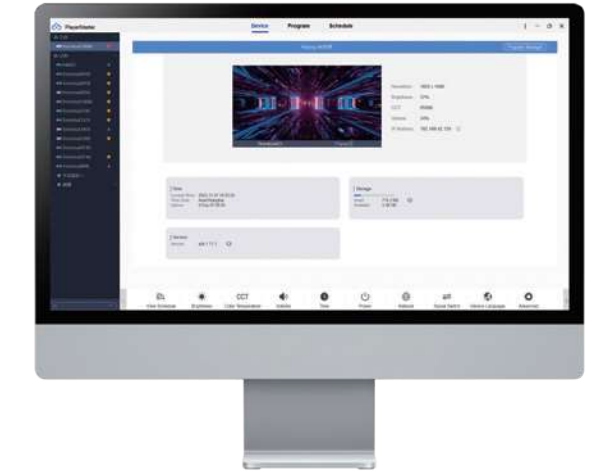
ColorlightCloud provides a secure cloud service for public LED displays. It is suitable for various scenarios from digital signage to smart city.

ColorlightCloud is widely used in various application scenarios such as LED lamp pole screen, vehicle-mounted advertising screen, commercial advertising screen, information publishing system, traffic sign, etc.



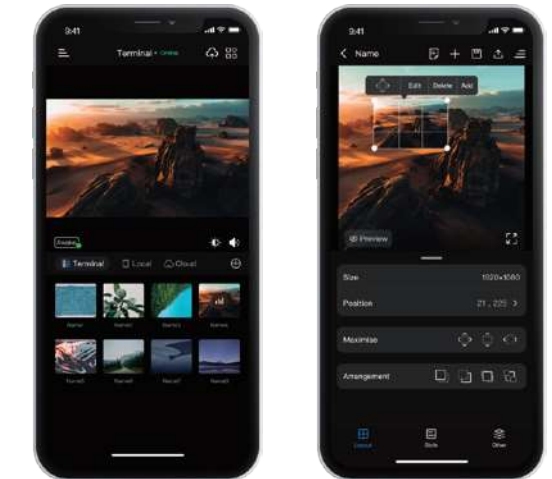
# PlayerMaster

PlayerMaster, based on Windows platform, is a client software for Colorlight players.



# LED Assistant

Control your cloud players on the go with LED Assistant, Colorlight's mobile management app. It works seamlessly on both Android and iOS devices.



# #07 CS Series

The Colorlight CS Series media server offers robust playback control, exceptional scalability, and high stability. Its high-performance hardware meets the demands of decoding, playback, and output for 4K, 8K, and 16K videos.

With the built-in GrandShow software—an advanced and reliable professional video playback solution—it can decode and play multiple media formats simultaneously, enabling video splitting, irregular-shaped splicing, and multi-screen combinations across various displays. The CS Series also supports multi-layer, multi-scene, and multi-device cascading, as well as seamless switching and other key features, making it the ideal choice for comprehensive video playback control.



# CS16K

## Media Server







CS16K is a highly capable multimedia server that excels in playback control performance, scalability, and stability. It boasts powerful hardware that enables the decoding and playback of two 8K videos, while also allowing for the output of eight 4K@60Hz video signals.

Paired with the preinstalled GrandShow, a professional playback control software crafted by Colorlight, CS16K can simultaneously decode and play media across various formats, delivering multiple display effects such as multi-screen splitting and irregular-shaped screen splicing.

Moreover, it offers flexible features such as multiple layers, multiple scenes, and seamless switching. These capabilities fully satisfy the diverse demands of the playback control industry.



CS16K

- 16K×4K**  
Output
-  **Hardware Decoding**
-  **Software Decoding**
-  **Creative Display**
- Sync**  
Frame Sync
-  **3D Mapping**
-  **Timeline**
- 7.1**  
Audio Channels
- 3D**  
Display
- HDR**  
WCG
- APP**  
Control
-  **Projection Blending**

## Specifications



CS20-8K Pro



CS16K

Output Channels	4×4K	8×4K
Video Port	3×DP 1.4+Type-C	8×DP 1.4
Max. Output Resolution	8192×4608 60FPS	16384×4608 60FPS
CPU	Intel® 24 Cores 32 Threads	Intel® 16 Cores 32 Threads
Memory	32 GB DDR5 RAM	128 GB DDR4 RAM
GPU	NVIDIA® Quadro 4000	2×NVIDIA® RTX™ A4000
High-Speed Storage	1.25TB NVMe SSD (Up to 4TB)	2TB NVMe SSD (Up to 8TB)
Ethernet	2.5G RJ45 Ports	1×10G RJ45 Port, 1×1G RJ45 Port
USB	4×USB 2.0, 6×USB 3.0	2×USB 2.0, 7×USB 3.0
Audio	1×In, 4×Out, 1×S/PDIF Out	1×In, 4×Out, 1×S/PDIF Out
Input Channels (Optional)	4×12G-SDI or 4×HDMI 2.0	8×12G SDI or 8×HDMI 2.0
NDI Video Over IP Capture	✓	✓
External Sync/Genlock	Optional	✓
Timecode In/Out	✓	✓
Embedded GrandShow License	✓	✓
EDID Management	✓	✓
Mounting System	4U 19"Rack Mount	5U 19"Rack Mount
Certifications	FC CE IC RoHS	FC CE IC RoHS UK

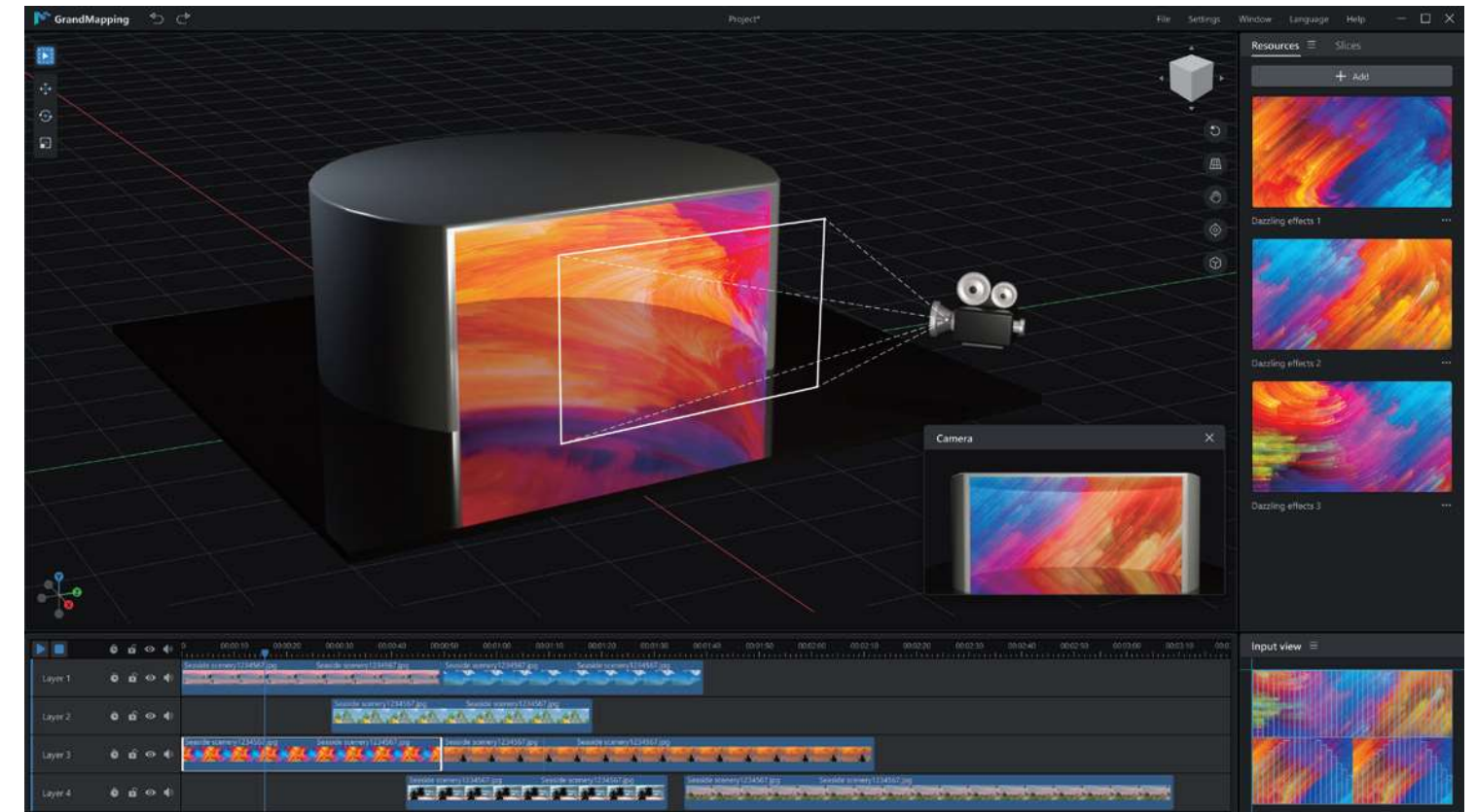
# GrandShow

GrandShow, featuring non-linear editing and real-time rendering, is a professional media playback and control software packed with advanced color adjustment features and powerful video editing capabilities. With its robust performance, stability, and reliability, it ensures smooth, high-quality playback while delivering an exceptional interactive experience.



# GrandMapping

GrandMapping is Colorlight's dedicated 3D mapping software for UV unwrapping and slice mapping. It precisely aligns 3D models with physical screens and integrates seamlessly with the GrandShow software and CS media servers. GrandMapping is ideal for commercial shows, immersive venues, and creative display applications, unlocking unlimited possibilities for the industry.



# #08 DS Series

The Rhino system is a distributed KVM management, video splicing, and audiovisual control system that operates on a network-based, node-based, and decentralized architecture, addressing issues such as information security and maintenance. Hosts are separated from KVM workstations in the server room, ensuring centralized management for enhanced security and simplified maintenance. Adopting a serverless architecture, the system converts audio and video signals into network streams via IP-based transmission, breaking down distance barriers.

Operators can control multiple hosts with a single keyboard and mouse, effortlessly sharing screen images and permissions across KVM workstations. Colorlight's phase synchronization technology ensures smooth and tear-free playback on LED/LCD video walls, making it ideal for command centers, data centers, and control centers.



# DS420

## Distributed Controller




DS420 is a 4K 2-in-1 distributed controller that combines video splicing and sending functions. The device can load up to 8.8 million pixels, with a maximum width or height of 8192 pixels, and supports 4K@60Hz input. It features 20 Ethernet ports, making it an ideal solution for large LED screen configurations. Equipped with multiple central control ports, the DS420 enables control of IR devices, relays, and IoT devices that adopt RS232/RS485 protocols.



DS420

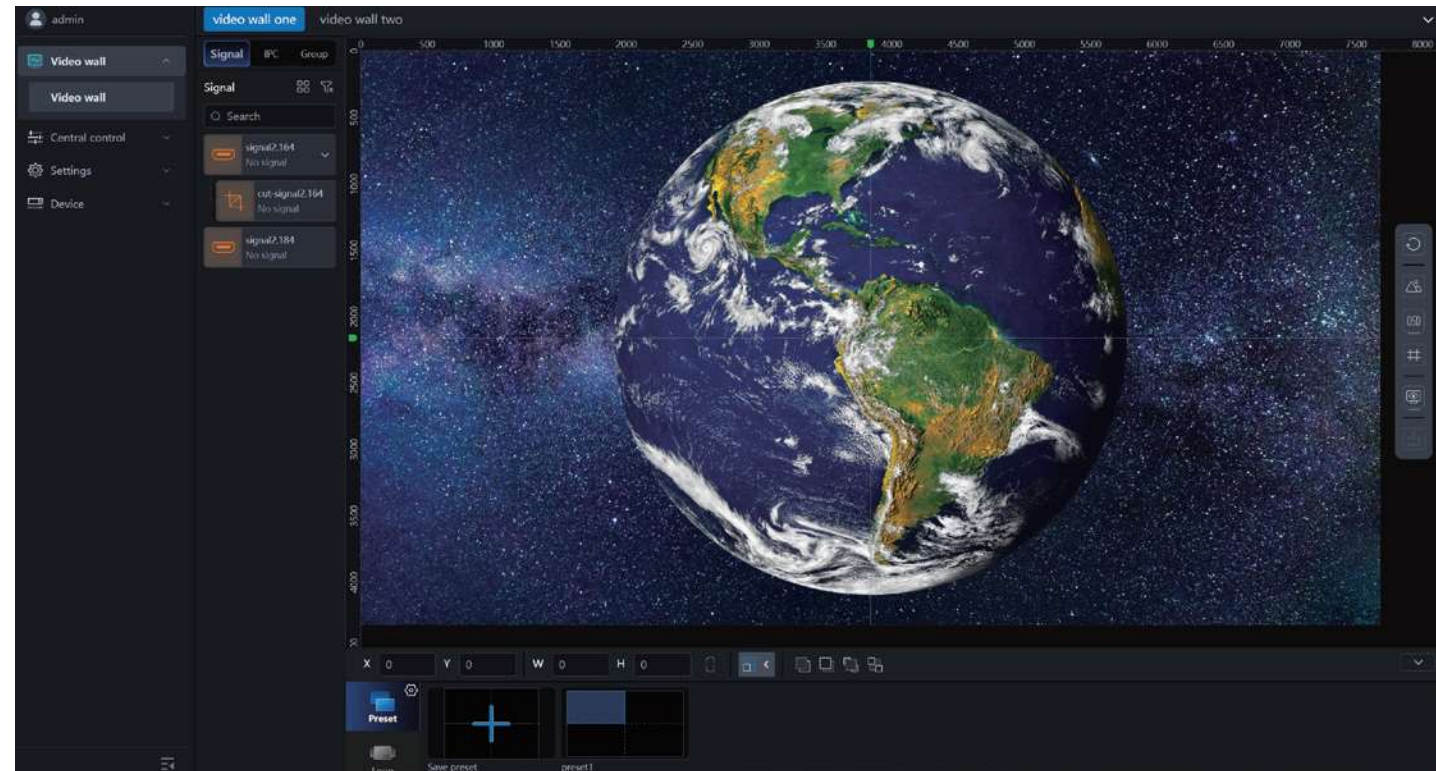


## Specifications

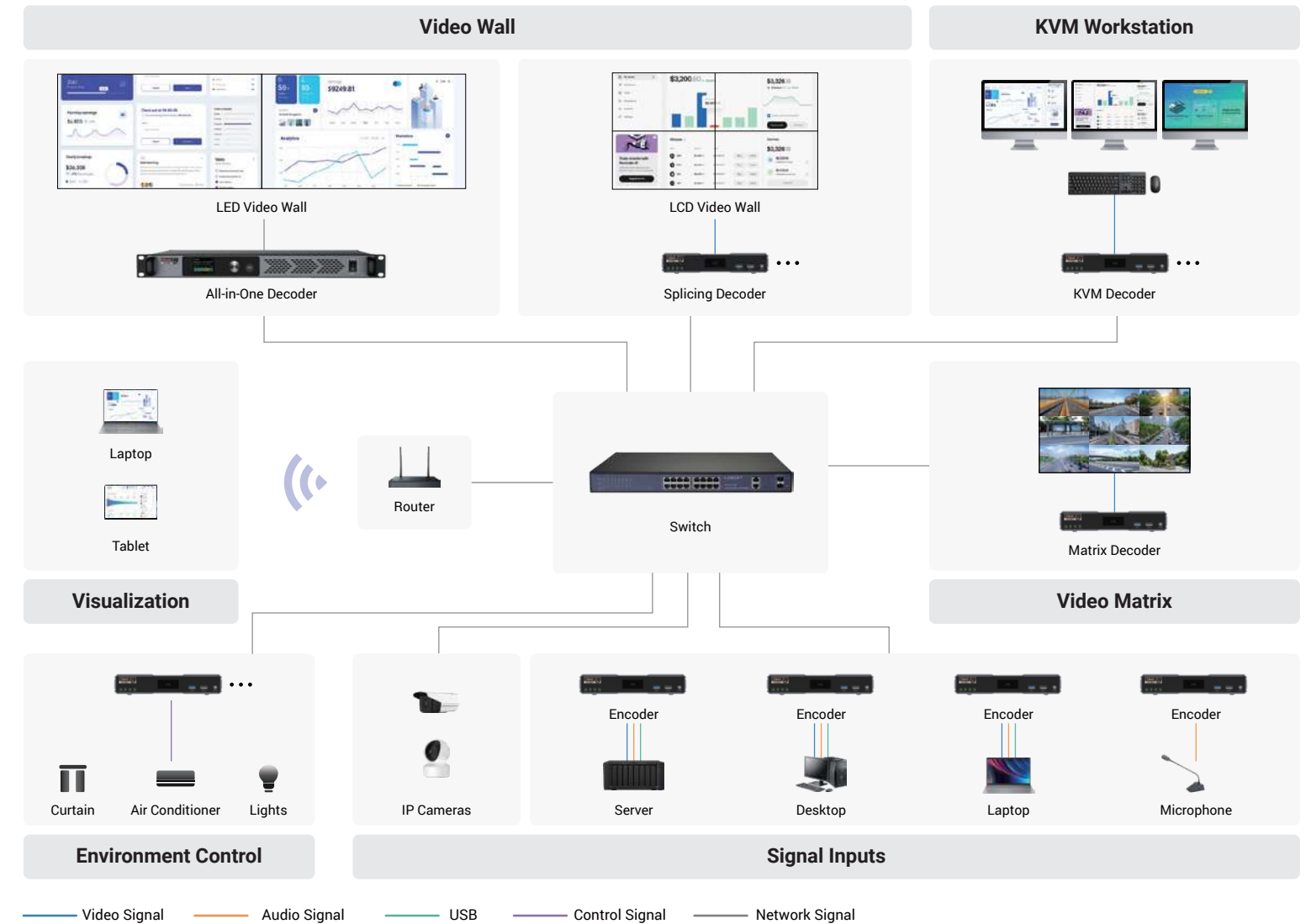
	 <b>DS40</b>	 <b>DS20</b>	 <b>DS420</b>	 <b>DS410</b>
Input/Output Resolution	4096×2160@60Hz	1920×1080@60Hz (4096×2160@30Hz)	8.8 Million Pixels	6.5 Million Pixels
Max. Layers	16	8	16	8
Video Port	1×HDMI 2.0 IN, 1×HDMI 2.0 OUT, 1×HDMI 2.0 LOOP	1×HDMI 2.0 IN, 1×HDMI 2.0 OUT, 1×HDMI 2.0 LOOP	20×RJ45	10×RJ45
Audio Port	1×AUDIO IN, 1×AUDIO OUT, 1×AUDIO LOOP	1×AUDIO IN, 1×AUDIO OUT, 1×AUDIO LOOP	1×AUDIO IN, 1×AUDIO OUT	1×AUDIO IN, 1×AUDIO OUT
Video Encoding	H.264, H.265	H.264, H.265	N/A	N/A
LAN/FIBER Port	1×LAN (PoE), 1×FIBER; LAN-FIBER Redundancy	1×LAN (PoE), 1×FIBER; LAN-FIBER Redundancy	1×LAN, 1×FIBER; LAN-FIBER Redundancy	1×LAN, 1×FIBER; LAN-FIBER Redundancy
Front Panel LCD	Displays device name and IP address	Displays device name and IP address	Displays device running status and connection status	Displays device running status and connection status
Control Port	1×RS-232, 1×IR, 1×RS-485, 1×RELAY	1×RS-232, 1×IR, 1×RS-485, 1×RELAY	1×RS-232, 1×IO, 1×IR, 1×RS-485, 1×RELAY	1×RS-232, 1×IO, 1×IR, 1×RS-485, 1×RELAY
USB Port	3×USB 3.0, 1×USB 2.0	3×USB 3.0, 1×USB 2.0	2×USB 3.0	2×USB 3.0
More	Video Encoding/Decoding, KVM Operation, Screen Splicing, Video Matrix	Video Encoding/Decoding, KVM Operation, Screen Splicing, Video Matrix	Video Decoding, LED Video Wall Display	Video Decoding, LED Video Wall Display
Intelligent Control	✓	✓	✓	✓
Preset	3000	3000	3000	3000
EDID Management	✓	✓	⊘	⊘
AI SR	✓	⊘	✓	⊘
HDMI Direct to LED	⊘	⊘	✓	✓
Certifications	<b>FC CE IC RoHS</b>	<b>FC CE IC RoHS</b>	<b>RoHS</b>	<b>RoHS</b>

# WebManager

WebManager is a professional LED display control web application that combines comprehensive features, strong performance, and an intuitive user experience to deliver efficient, streamlined screen control.



## System Topology





# #09 *Extending*

Colorlight elevates its service capabilities through four core software solutions and platforms.

Calibration System ensures exceptional image accuracy and consistency. Colorlight Developer expands development possibilities and unlocks greater potential. LEDMaster enables remote screen monitoring and maintenance, helping reduce operational costs. Kylin unifies video, audio, and central control systems, breaking down system barriers to deliver efficient, simplified integrated control.

Together, these solutions create a more advanced and valuable display service experience.



# CCM6000

## Calibration System

CCM6000 is a Colorlight scientific-grade calibration camera designed for high precision and efficiency, widely used for on-site and factory calibration of COB, Mini, and Micro LED screens. It features a CIE1931-XYZ filter that captures measurement data closely aligned with human visual perception.

Equipped with a 16-bit high-precision sensor and a built-in sensor temperature control system, CCM6000 delivers more accurate and stable image data acquisition. It supports calibration in darkrooms as well as under limited ambient light, ensuring reliable calibration performance regardless of environmental conditions.

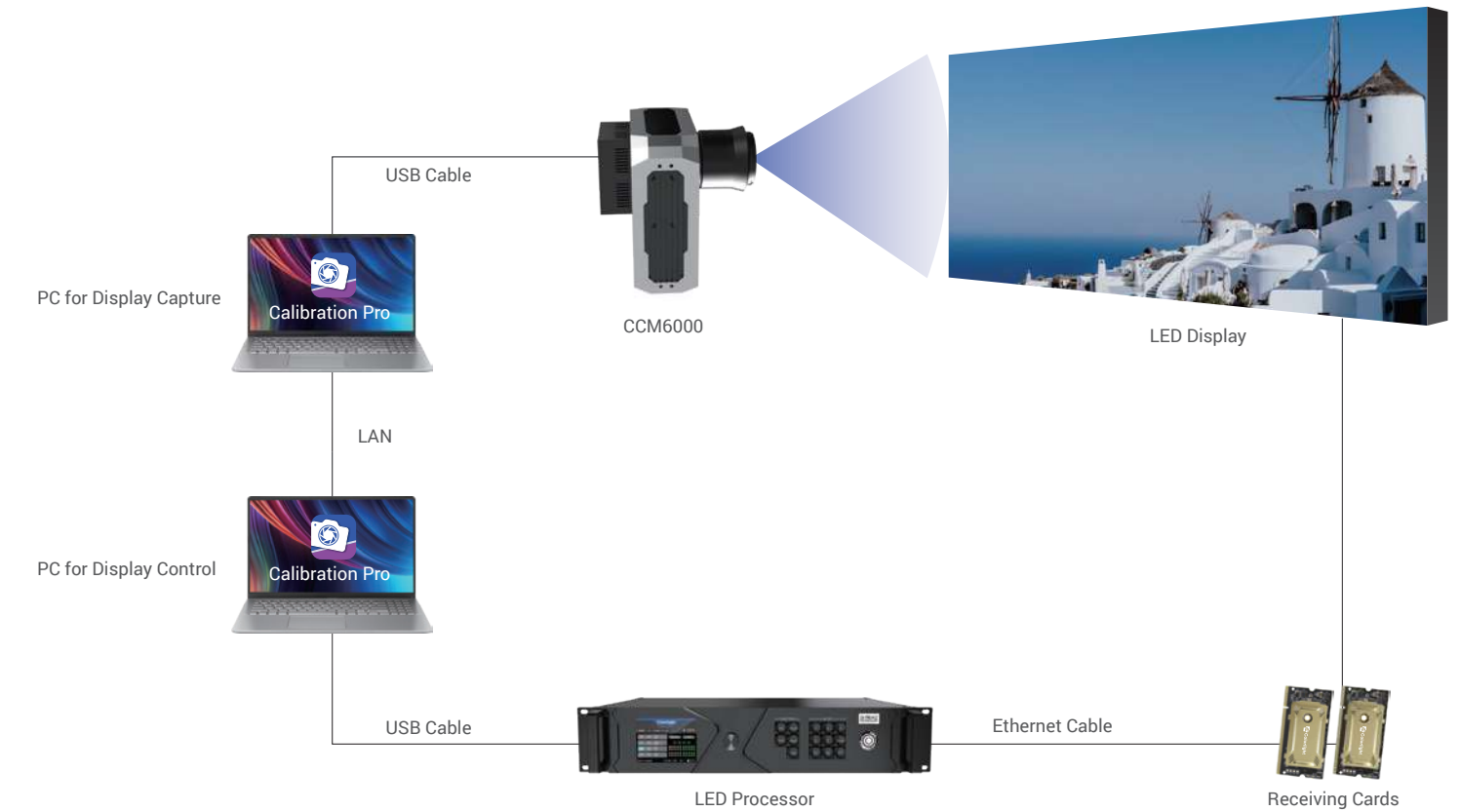


CCM6000

### Parameters

Resolution	9600×6400
Full Well	8000e-@(1×1binning)
Dark Current	0.0022 electrons/second at 0°C
ADC	16-bit (0-65535)
Interface	USB 3.0
System Accuracy	Luminance(Y)±1%, Color Coordinates±0.003
Repeatability	Luminance(Y)±0.15%, Color Coordinates±0.0005
Cooling	Maximum 35 C lower than ambient temperature

## System Diagram

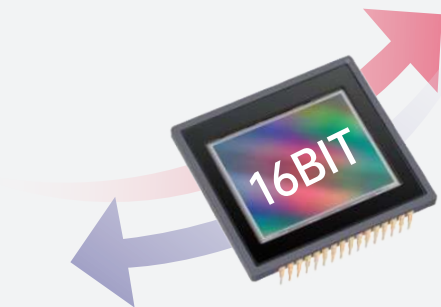


## Features



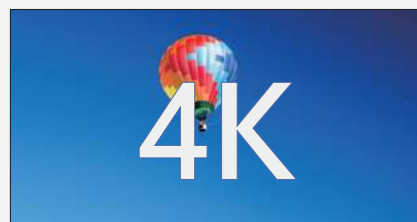
### High Precision

- 16-bit high precision sensor
- Powerful cooling system
- XYZ filters precisely replicate human visual perception



### High Efficiency

- Cabinet brightness calibration: ≈40 seconds
- Cabinet chromaticity calibration: ≈1 minute
- 4K screen brightness calibration: ≈5 minutes
- 4K screen chromaticity calibration: ≈8 minutes



## Features



### Applications

- Factory/On-site calibration of SMD/COB/GOB screens
- High/Low brightness calibration
- Multi-gray level calibration
- Seam correction
- Thermal effect removal
- Multi-batch LEDs calibration

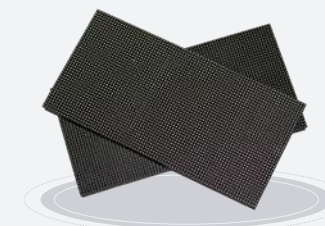


Full-Screen Calibration

### Cabinet Calibration



### Module Calibration



### Production Line Calibration



# Mica

## Intelligent Core Calibration System

Mica 310 Pro is Colorlight's self-developed, fully automated pixel-by-pixel calibration system. It integrates a scientific area array color meter, assembly line equipment, and a data storage management server to enable comprehensive production management. By improving production efficiency and calibration performance, it streamlines production management, ensures data security, simplifies operation, and lowers after-sales costs.

Mica 301B is Colorlight's self-developed solution for detecting and sorting LED modules, PCBs, and masks based on the ink color.



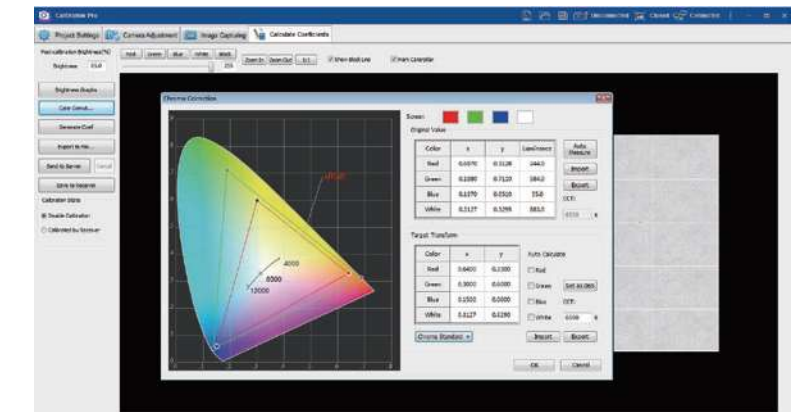
Mica 310 Pro



Mica 310B

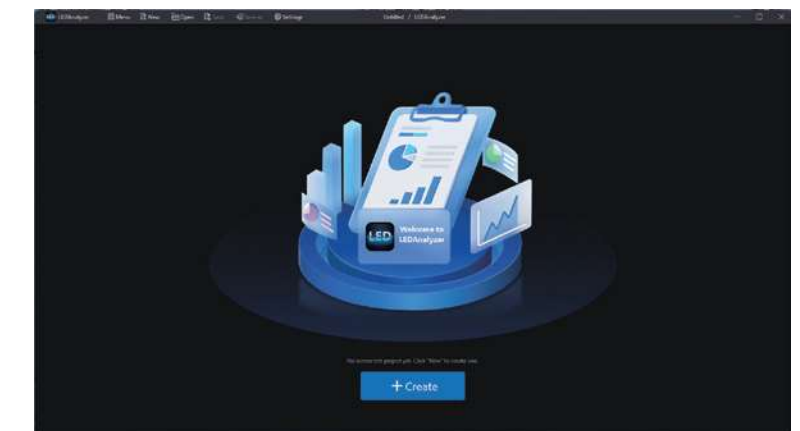
# Calibration Pro

Calibration Pro is a professional LED display calibration software. Since 2010, it has calibrated over 100 billion LEDs. Its powerful algorithms have been proven in both factory and on-site applications, and it is widely used for module, cabinet, and full-screen calibration.



# LED Analyzer

LED Analyzer is a professional MLED display testing software that integrates industry-standard testing methods, equipment, and criteria. It supports automated testing of 14 display performance metrics—including brightness, contrast, gamma, PQ, color gamut, color accuracy, and refresh rate, etc., and generates comprehensive test reports.

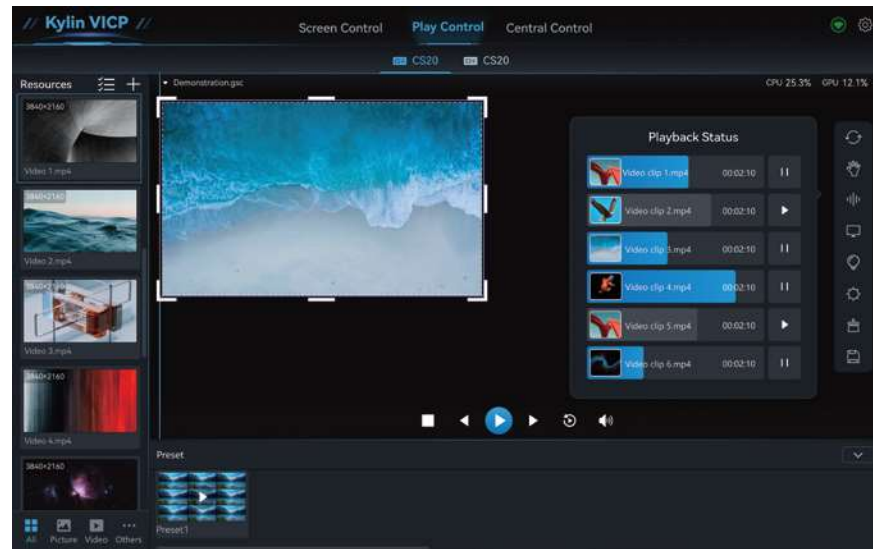


# Kylin

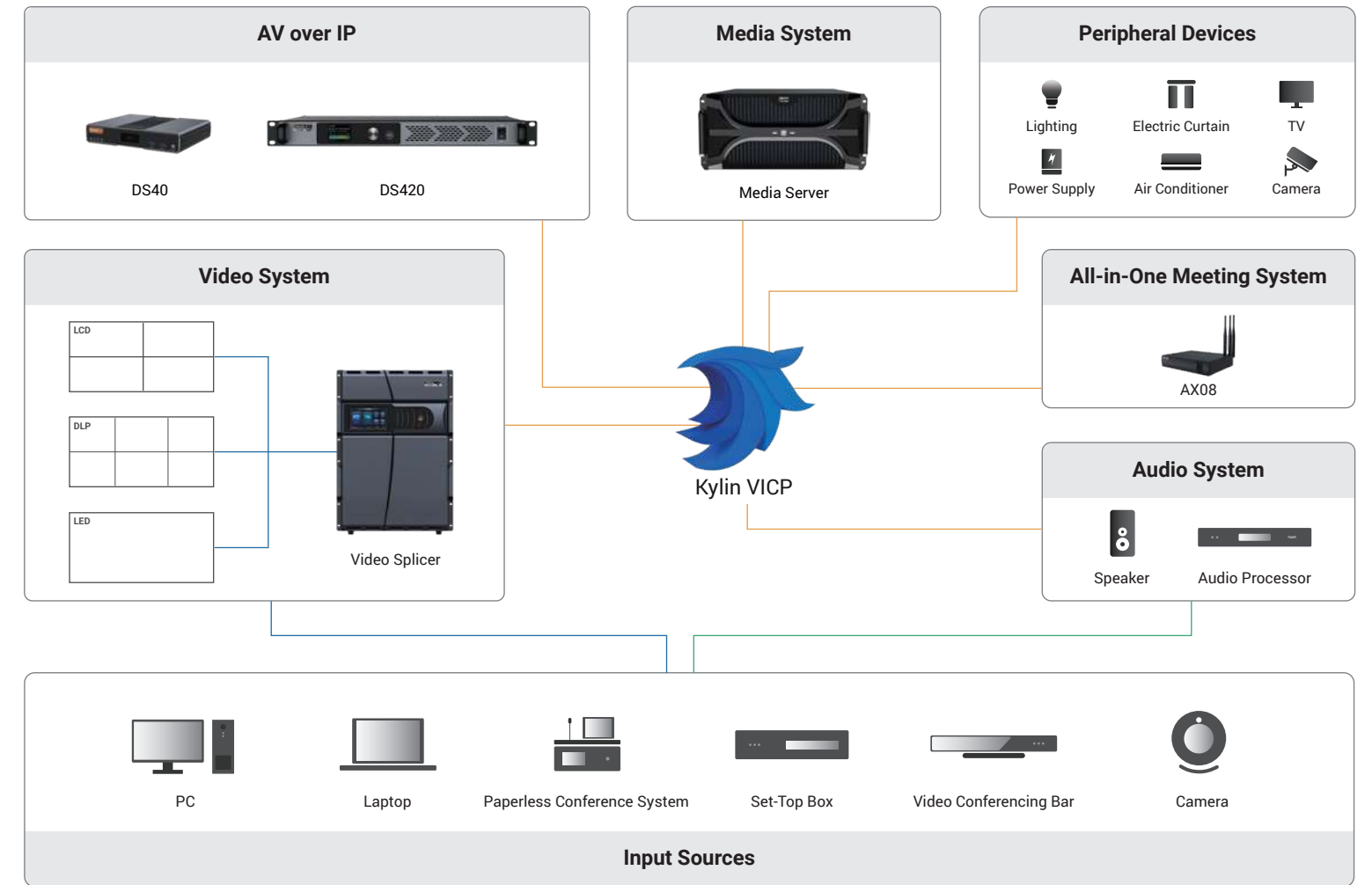
## Visualization Intelligent Control Platform

Colorlight's integrated management and control solution, built around the Kylin Visualization Intelligent Control Platform, is designed to simplify management of video, audio, and central control systems, improving coordination between subsystems and overall control efficiency.

Whether in high-demand command centers or interactive exhibition displays, this mobile platform provides intuitive visual management, allowing users to operate multiple systems seamlessly.



## System Topology



## Features

### One Platform. Total Control. More Efficiency.

Kylin VICP controls a vast array of video, audio, and peripheral devices, simplifying management and boosting operational efficiency.



### Intuitive. Easy to Use.

Display real-time monitoring of input previews, screen status, and playback status, streamlining multi-device management.



### Device Monitoring. Stable Operation.

Monitor real-time device and server status to ensure smooth performance.



# Colorlight Developer

Colorlight Developer provides partners with essential resources, including standard API documentation and technical consulting services, helping them integrate Colorlight's products into their systems with ease.

Open for **Connection**  
Innovate at Your Will

Join Colorlight Developer for creative visual future



## Full Support for Various Devices

Effortlessly integrate and extend across all devices

Video Splicer



LED Control System



Cloud Player



Media Server



## Efficient Development

Comprehensive SDK. Technical Support. DEMO Showcase

Comprehensive SDK

Rich and detailed API documentation to guide your development journey.



Technical Support

Professional assistance whenever you need it.



DEMO Showcase

Easy-to-follow visual demos for deeper insights.



## Compatible with Multiple Platforms

Full support for various operating systems, enabling cross-platform software development



Windows



Linux



macOS



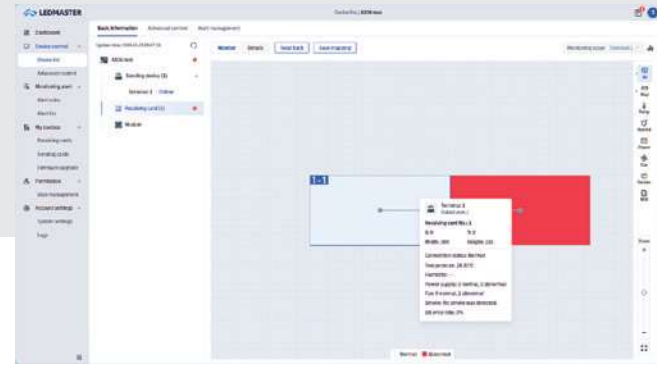
Android

# LEDMaster

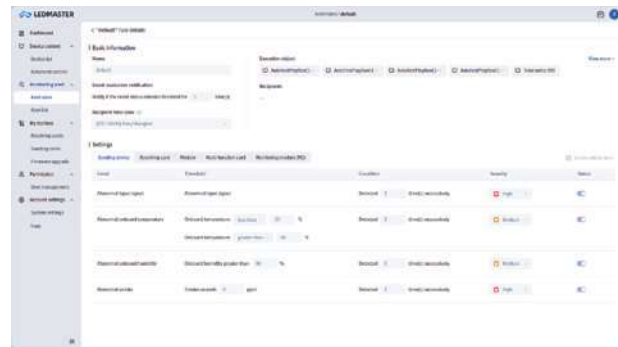
LEDMaster is a professional LED monitoring and operations platform, offering centralized remote monitoring, fault detection, one-click recovery, and remote control. Real-time display monitoring enables users to quickly address failures, manage screen risks, and boost operational efficiency while reducing costs.



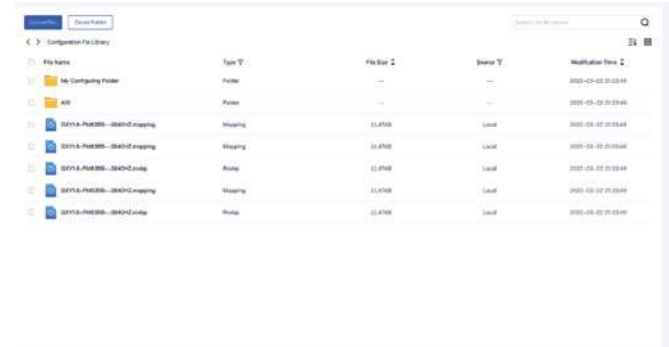
· Display real-time status



· See failures in real time, from anywhere



· Custom alert configuration



· Powerful profile library for configuring remote screens

